

MONTHLY MEMBERSHIP PROGRESS REPORT

District 27 C2

Results as of: 9/30/2023

GMT:

LOCATION WISCONSIN

GMT CA

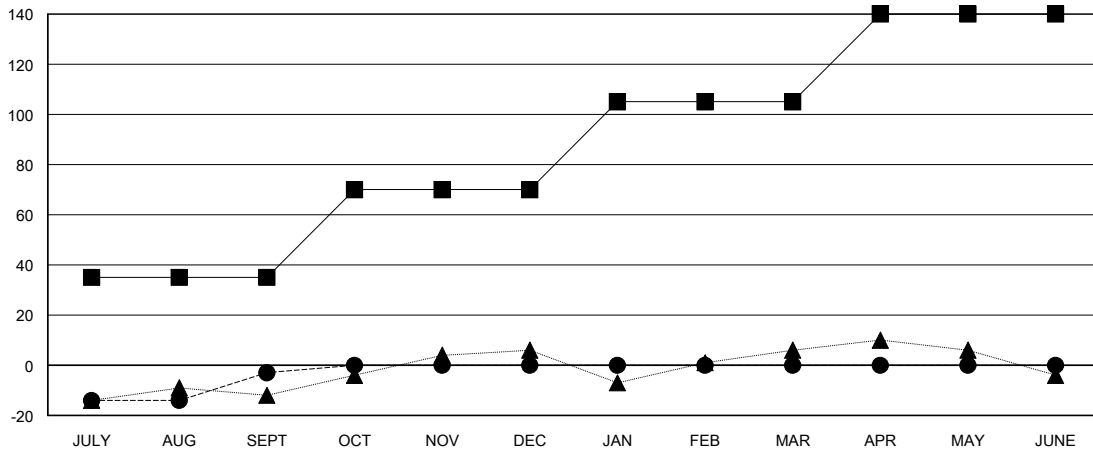
| Clubs | | | |
|-----------------------|---------------|-----------|---------------|
| RESULTS FOR 2023-2024 | | | |
| QUARTER | NEW CLUB GOAL | NEW CLUBS | DROPPED CLUBS |
| JULY/AUG/SEPT | 0 | 0 | 0 |
| OCT/NOV/DEC | 1 | 0 | 0 |
| JAN/FEB/MAR | 0 | 0 | 0 |
| APR/MAY/JUNE | 0 | 0 | 0 |

| Members | | | |
|-----------------------|------------------------|----------------------|--|
| RESULTS FOR 2023-2024 | | | |
| QUARTER | MEMBER GROWTH NET GOAL | MEMBER GROWTH ACTUAL | DROPPED MEMBERS ACTUAL (including transfers) |
| JULY/AUG/SEPT | 35 | 39 | 36 |
| OCT/NOV/DEC | 35 | 0 | 0 |
| JAN/FEB/MAR | 35 | 0 | 0 |
| APR/MAY/JUNE | 35 | 0 | 0 |

GOALS AND ACTUAL NEW CLUBS CUMULATIVE



GOALS AND ACTUAL MEMBERS CUMULATIVE



| | |
|------------------------|-----------|
| DROPPED CLUBS: 0 | |
| DROPPED MEMBERS | |
| DECEASED | 7 |
| CLUB CANCELLED | 0 |
| OTHER | 29 |
| TOTAL | 36 |

17 CLUBS OF 40 ADDED 1 OR MORE NEW MEMBERS

[CLICK HERE FOR CUMULATIVE MEMBERSHIP DATA](#)

| | |
|---------------------------------|--------------|
| GENDER DISTRIBUTION | |
| MALE | 930 (64.99%) |
| FEMALE | 501 (35.01%) |
| TOTAL FAMILY UNIT MEMBERS | 358 |
| FAMILY MEMBERS PAYING HALF DUES | 181 |